



Coffee and Pregnancy: What Peer-Reviewed Research Says About Caffeine and Maternal Health



The American College of Obstetricians and Gynecologists, after reviewing decades of research on caffeine consumption during pregnancy, recommends limiting caffeine intake to less than 200 milligrams per day — roughly the amount

in one 12-ounce cup of coffee or two smaller 6-ounce cups. At or below this threshold, peer-reviewed research has not found consistent evidence linking caffeine consumption to miscarriage, preterm birth, or significant fetal harm, and many obstetricians explicitly support moderate coffee consumption during pregnancy as part of normal life. Above 200 milligrams per day, the research becomes less reassuring, with some studies showing modest associations with low birth weight and other concerns. This article explains what the actual peer-reviewed evidence shows, why caffeine metabolism slows dramatically during pregnancy, what hidden caffeine sources matter, and how to make informed decisions with your healthcare provider — because no general article can replace the personalized medical advice that a real obstetrician gives during prenatal care.

This guide is not medical advice. It is educational reference based on the published positions of the American College of Obstetricians and Gynecologists, the March of Dimes, the European Food Safety Authority, the United Kingdom National Health Service, and recent peer-reviewed research. Every pregnancy is different, and every decision about caffeine intake during pregnancy should be discussed with the obstetrician, midwife, or family medicine physician providing prenatal care.

The ACOG 200mg Guideline

The Coffee Encyclopedia



coffee cup with measuring scale showing caffeine content guidelines

Image curation pending

— PuertoRicoCoffeeShop.com

The American College of Obstetricians and Gynecologists (ACOG) published Committee Opinion 462 in 2010 establishing the 200-milligram daily limit as the official US position on caffeine during pregnancy. The Committee Opinion was reaffirmed in subsequent years and continues to represent ACOG's published guidance. Internationally, the United Kingdom National Health Service and the European Food Safety Authority have arrived at the same threshold through independent review of the same research base.

The 200-milligram threshold was chosen as a reasonable upper limit at which the available research did not show consistent evidence of harm. Below 200 milligrams, prospective studies of large pregnant populations have generally not found that caffeine consumption increased rates of miscarriage, preterm birth, or other major adverse outcomes after controlling for confounding factors. Above 200 milligrams, the picture becomes less clear, with some studies showing modest associations with adverse outcomes and other studies showing no association.

To put 200 milligrams in everyday terms: a 12-ounce cup of brewed coffee typically contains 95 to 165 milligrams of caffeine depending on the bean, roast, and brewing

method. A standard 8-ounce home brew is usually 95 to 130 milligrams. A single shot of espresso is 47 to 64 milligrams. A 16-ounce specialty drink from a major coffee chain can contain 175 to 260 milligrams or more, occasionally exceeding the daily limit in a single drink. The actual caffeine in any given cup varies more than most people realize, which is why honest tracking matters more than relying on average estimates.

ACOG's position emphasizes moderation rather than elimination. Most obstetricians do not require pregnant patients to give up coffee entirely, and many physicians explicitly support continued moderate consumption during pregnancy as part of a normal life with normal small pleasures.

Why Caffeine Metabolism Slows Dramatically in Pregnancy

The Coffee Encyclopedia



*caffeine half-life metabolism pregnancy diagram
trimester*

Image curation pending

— PuertoRicoCoffeeShop.com

One of the most important and least-discussed facts about caffeine and pregnancy is that the body metabolizes caffeine much more slowly during pregnancy than at any other time in adult life.

In a non-pregnant adult, caffeine has a half-life of roughly 4 to 6 hours. This means a 100-milligram dose at 8 AM is reduced to 50 milligrams by mid-afternoon and effectively cleared by evening. The CYP1A2 liver enzyme primarily responsible for caffeine breakdown operates at a steady baseline rate, modulated by genetics but generally consistent within an individual.

During pregnancy, CYP1A2 activity declines progressively. By the first trimester, caffeine clearance has slowed by roughly 15 percent. By the second trimester, the slowdown reaches 50 percent. By the third trimester, caffeine half-life can extend to 15 to 20 hours — meaning a single morning cup of coffee may still have measurable caffeine in the bloodstream the following morning.

The practical implication is that a pregnant woman drinking the same amount of coffee she drank pre-pregnancy ends up with substantially higher peak caffeine concentrations and prolonged exposure. The same coffee that felt comfortable at 100 milligrams pre-pregnancy may produce noticeable jitteriness, sleep disruption, or anxiety during the third trimester. This is part of why many women naturally lose interest in coffee during pregnancy — the body is signaling that the dose feels different.

The slowed metabolism also affects the developing fetus. Caffeine crosses the placenta freely within about 15 minutes of maternal consumption, reaching fetal blood concentrations roughly equal to maternal levels. The fetal liver, however, does not yet produce CYP1A2 enzymes capable of metabolizing caffeine. Caffeine in the fetal bloodstream therefore stays in circulation much longer than in the maternal bloodstream, meaning the fetus experiences a more prolonged exposure to whatever caffeine the mother consumed.

What the Research Actually Shows

The body of research on caffeine and pregnancy outcomes is large but historically conflicted. Older studies from the 1980s and 1990s sometimes showed associations between high caffeine consumption and adverse outcomes, but those studies often

suffered from recall bias (women interviewed after a miscarriage tend to remember caffeine intake differently) and confounding (women who drank more coffee also tended to smoke more, drink more alcohol, or have other risk factors).

The more rigorous prospective cohort studies that emerged in the 2000s and 2010s have produced more consistent findings. The Savitz et al. study examined 2,407 pregnancies and found no association between caffeine consumption and miscarriage at any tested level when proper controls were applied. The integrative review by Francisco and colleagues in 2023, examining 257 published articles, found the evidence base inconsistent but generally supportive of moderate consumption being safe.

The strongest signal in recent research is for low birth weight rather than miscarriage. Several large cohort studies have found small associations between caffeine consumption (even at the recommended 200-milligram limit) and modestly reduced birth weight, on the order of 50 to 100 grams. This is small in absolute terms — well within the normal range of birth weight variation — but consistent enough across studies to take seriously.

A 2021 Penn Medicine study added a counterintuitive finding: low to moderate caffeine intake during pregnancy was associated with reduced gestational diabetes risk. The researchers were careful to note that this finding does not justify recommending caffeine to non-coffee-drinkers, but it does add complexity to the simple "less is better" framing.

The honest summary is that the research at 200 milligrams or less is reassuring but not pristine, and the research above 200 milligrams becomes increasingly cautious. ACOG's position — moderate consumption appears safe, higher consumption introduces uncertainty — reflects the actual state of evidence accurately.

Caffeine Sources Beyond Coffee

The Coffee Encyclopedia



*various caffeine sources coffee tea cola chocolate
energy drinks*

Image curation pending

— PuertoRicoCoffeeShop.com

The 200-milligram daily limit applies to all caffeine sources combined, not coffee alone. Many pregnant women track their coffee intake carefully and forget about other sources that quietly add up.

A standard 8-ounce cup of black tea contains 40 to 50 milligrams of caffeine. Green tea has slightly less, typically 25 to 35 milligrams. A 12-ounce cola contains 35 to 45 milligrams. A 16-ounce energy drink can contain 150 to 300 milligrams or more. A 1-ounce piece of dark chocolate has 20 to 30 milligrams; milk chocolate has less. Some over-the-counter pain relievers (Excedrin Migraine, certain combination cold medicines) contain 65 to 130 milligrams of caffeine per dose.

Pregnant women drinking one cup of coffee in the morning, a cola at lunch, two cups of black tea in the afternoon, and a piece of dark chocolate after dinner are easily over 200 milligrams without realizing it. The cumulative tracking is what matters, not the coffee alone. Many obstetricians recommend keeping a simple log for a few days to see actual total intake before making decisions about reduction.

The Tommy's caffeine calculator, the March of Dimes tracking guide, and similar tools from medical organizations help patients identify hidden caffeine sources and adjust intake to stay within recommendations.

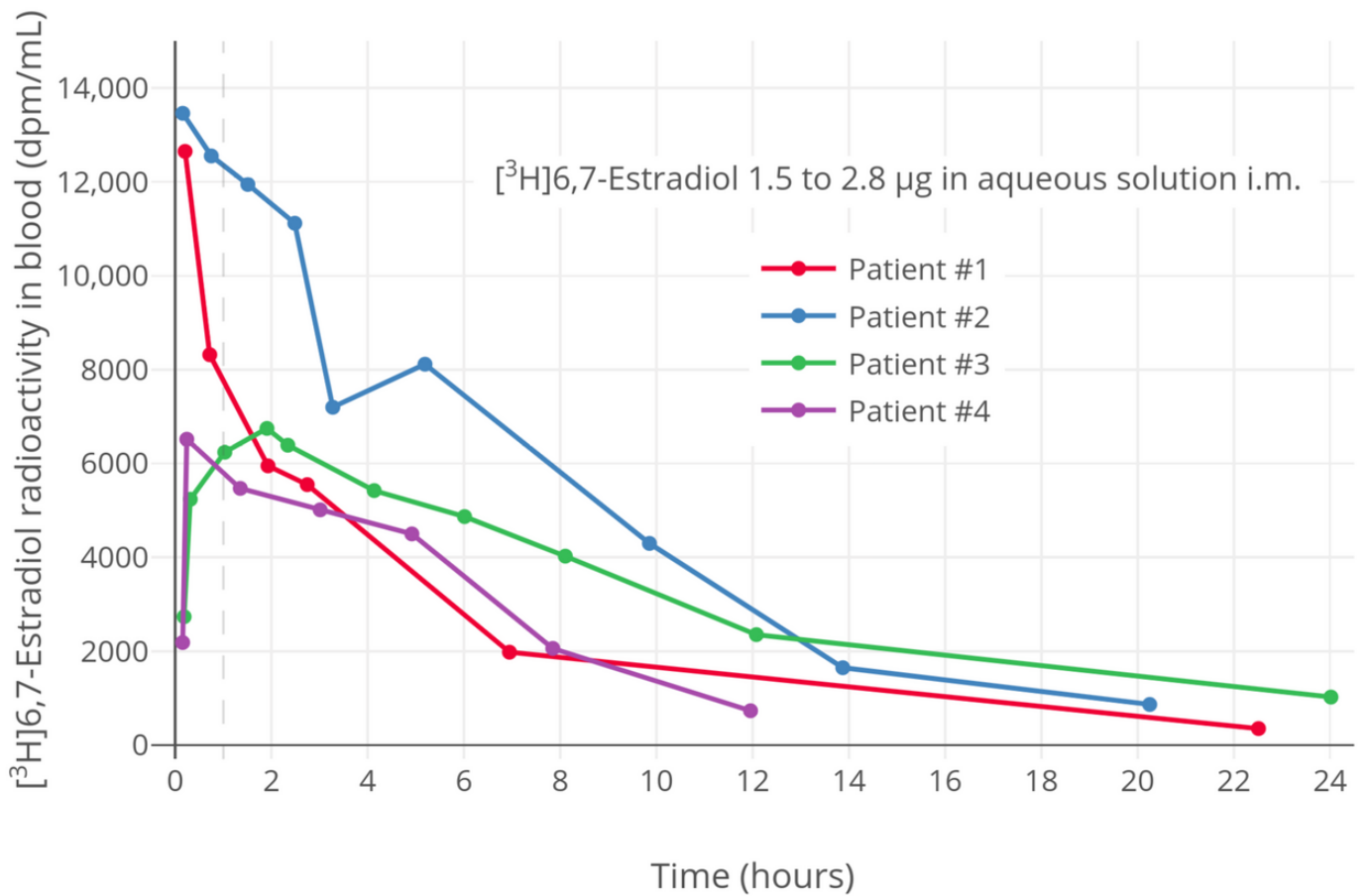
Decaffeinated Coffee: A Useful Tool for Pregnancy

For coffee lovers who want to reduce caffeine intake without giving up the ritual, decaffeinated coffee is a practical option. Modern decaffeination processes remove 97 to 99.9 percent of caffeine while preserving most of the flavor compounds, producing a cup that tastes recognizably like coffee.

The three primary decaffeination methods are Swiss Water Process (caffeine extracted using only water and activated charcoal, no chemical solvents), CO2 Process (supercritical carbon dioxide extracts caffeine, preserving flavor exceptionally well), and Methylene Chloride Process (small amounts of methylene chloride solvent extract caffeine, then evaporated; the FDA permits residue up to 10 parts per million but typical residues are under 1 ppm). All three methods produce coffee considered safe by FDA and EFSA standards. Swiss Water and CO2 are often preferred during pregnancy by those who prefer to avoid chemical solvents entirely, though the actual residue levels in methylene chloride decaf are far below any threshold of biological concern.

A typical 12-ounce cup of decaffeinated coffee contains 2 to 5 milligrams of caffeine — essentially negligible. A pregnant woman switching to decaf can effectively eliminate caffeine from her daily routine while keeping the coffee experience intact. Many specialty roasters now offer high-quality decaffeinated single-origin coffees that taste meaningfully better than the supermarket decaf of past decades.

Gestational Diabetes and the Penn Medicine Finding



The 2021 Penn Medicine study published in JAMA Network Open analyzed prospective data from 2,529 pregnant women in the National Institute of Child Health and Human Development Fetal Growth Studies cohort. The researchers measured caffeine consumption through self-reported intake and plasma caffeine concentrations at 10 to 13 weeks of gestation. The headline finding: women consuming low to moderate caffeine (under 200 milligrams per day) had reduced incidence of gestational diabetes compared to non-consumers.

The mechanism is uncertain but likely involves caffeine's effects on insulin sensitivity and glucose metabolism, plus the contribution of other coffee compounds (chlorogenic acids, polyphenols) that have established anti-inflammatory effects. The researchers were explicit that the finding does not justify recommending caffeine to non-coffee-drinkers, but it adds nuance to the simple "less caffeine is better" framework that has dominated pregnancy advice for decades.

The Penn study is one piece of a growing body of research suggesting that the relationship between coffee and pregnancy is more complex than the simplistic "caffeine is bad" framing. Coffee contains over 1,000 bioactive compounds, and caffeine is only one of them. Some of the other compounds — particularly the polyphenols and antioxidants — appear to have effects that may partially offset or counteract the concerns associated with caffeine alone.

Breastfeeding and Caffeine

The American Academy of Pediatrics has published guidance stating that moderate caffeine consumption is safe for breastfeeding mothers. A small percentage of caffeine consumed by the mother appears in breast milk — roughly 1 percent of the maternal dose — but the levels reaching the breastfeeding infant are typically well below thresholds of biological concern.

The AAP guidance generally supports up to 2 to 3 cups of coffee per day during breastfeeding, with the caveat that some breastfed infants of mothers with higher caffeine intake may show fussiness, irritability, or sleep disturbance. The exposure pattern is highly individual; some infants are unaffected by maternal caffeine intake, and others react noticeably to even modest amounts.

A common practical strategy is timing caffeine consumption right after breastfeeding sessions, so that the peak maternal caffeine concentration occurs before the next feeding rather than during it. This can reduce the caffeine concentration in milk at the time of consumption.

Coffee in the Puerto Rican Pregnancy Tradition



In Puerto Rican family culture, coffee is so deeply woven into daily life that pregnancy raises real practical questions about how to participate in the rituals that define family time. Café con leche in the morning, the visit to abuela's house with coffee on the stove, the after-dinner sobremesa with a small cup — these are not optional habits in many Boricua households. They are how relationships are conducted.

The good news is that the traditional Puerto Rican café con leche, prepared in the standard household proportion of roughly 70 percent milk to 30 percent coffee, contains a moderate caffeine dose. A typical 6-ounce cup of café con leche made with traditional cafetera coffee contains roughly 40 to 60 milligrams of caffeine — well within the daily allowance for two or three servings across a day.

For pregnant women in Puerto Rican families who want to reduce caffeine further, decaffeinated café con leche is a tradition-preserving option. The milk-forward profile of café con leche means even decaffeinated coffee, prepared in the same way, produces a cup that tastes very close to the original. Many Puerto Rican coffee roasters now offer decaffeinated single-origin coffees from Yauco and Adjuntas that work well in the family cafetera.

The overall message from obstetricians is reassuring for Boricua families: the coffee tradition does not need to be abandoned during pregnancy. Moderation, awareness of total daily caffeine intake (including from other sources), and conversation with the prenatal care provider together support continued participation in the rituals that matter.

Key Facts

- ACOG recommends limiting caffeine to less than 200 mg per day during pregnancy (about one 12-oz cup of coffee)
- Caffeine half-life slows from 4-6 hours pre-pregnancy to 15-20 hours by third trimester
- The fetal liver cannot metabolize caffeine; fetal exposure lasts longer than maternal exposure
- Caffeine crosses the placenta freely within about 15 minutes of maternal consumption
- Modern peer-reviewed research at moderate intake levels has not consistently shown miscarriage or preterm birth associations

- Some research shows modest associations between caffeine and reduced birth weight (50-100 grams)
- Caffeine is in tea, cola, energy drinks, chocolate, and some medications — total daily intake is what matters
- Decaffeinated coffee contains 2-5 mg per cup; Swiss Water and CO2 processes use no chemical solvents
- A 2021 Penn Medicine study found low to moderate caffeine associated with reduced gestational diabetes risk
- The AAP supports moderate caffeine (2-3 cups daily) during breastfeeding
- A typical Puerto Rican café con leche (70/30 milk to coffee) contains about 40-60 mg caffeine per 6-oz serving

<https://www.youtube.com/embed/qrbFXkl4RzU>

Frequently Asked Questions

Can I drink coffee at all during pregnancy?

According to ACOG, yes — moderate coffee consumption (under 200 mg of caffeine per day) is generally considered safe during pregnancy based on current research. This is

roughly one 12-ounce cup of brewed coffee or two smaller 6-ounce cups. Many obstetricians explicitly support continued moderate coffee consumption during pregnancy. However, every pregnancy is different, and the right answer for any individual should be discussed with her own obstetrician or midwife who knows her medical history.

Why does coffee feel different during pregnancy?

Caffeine metabolism slows dramatically during pregnancy. By the third trimester, caffeine half-life can be 3-4 times longer than pre-pregnancy. This means the same cup of coffee produces higher peak caffeine concentrations and prolonged exposure, which can cause more noticeable jitteriness, sleep disruption, or anxiety. Many women naturally find their tolerance for coffee declines as pregnancy progresses, and this is the body signaling something real.

Is decaf coffee safe during pregnancy?

Yes. Decaffeinated coffee contains only 2-5 mg of caffeine per cup, essentially negligible. All three major decaffeination processes (Swiss Water, CO₂, and Methylene Chloride) produce coffee considered safe by FDA and EFSA standards. For those who specifically want to avoid any chemical residues, Swiss Water Process and CO₂ Process decaf are good options. Many specialty roasters now offer high-quality decaffeinated coffees that taste meaningfully better than older commodity decaf.

What about café con leche, espresso, or specialty coffee drinks?

Espresso shots typically contain 47-64 mg of caffeine each. Specialty drinks at major coffee chains vary widely — a 16-oz drink can range from 100 mg to over 260 mg depending on the size and number of shots. A traditional Puerto Rican café con leche made with the standard 70/30 milk-to-coffee ratio contains about 40-60 mg of caffeine per 6-oz serving. Total daily caffeine across all sources should stay under 200 mg.

Should I worry if I drank a lot of coffee before knowing I was pregnant?

Most obstetricians would say not to worry about caffeine intake in the days or weeks before pregnancy was confirmed. Current research does not show that occasional higher-than-recommended caffeine intake in early pregnancy causes meaningful harm. The recommendation to limit caffeine going forward applies from the date of awareness onward. If you have specific concerns, discuss them with your prenatal care provider, who can address your individual situation.

Related Articles

- [Caffeine: How It Works in the Human Body](#)
- [Coffee and Sleep: The 6-Hour Rule and the Science of Caffeine Timing](#)
- [Coffee and Heart Health](#)
- [Café con Leche: The Puerto Rican Morning Tradition](#)
- [Café Criollo: The Traditional Puerto Rican Brewing Tradition](#)
- [Puerto Rican Coffee Culture: Sobremesa, Daily Rituals, and Family Life](#)

Important Note

This article is educational reference based on published positions of medical organizations and peer-reviewed research. It is not a substitute for personalized medical advice. Decisions about caffeine consumption during pregnancy should be made in conversation with your obstetrician, midwife, or family medicine physician, who knows your individual medical history and pregnancy circumstances. If you have specific concerns about coffee or caffeine during your pregnancy, please discuss them with your prenatal care provider.

Taste Authentic Puerto Rico Coffee

For coffee-loving Boricua families navigating pregnancy, the right beans matter as much as the right amount. Whether you choose to enjoy a moderate daily café con leche or switch to a high-quality decaf during your pregnancy, the heritage coffee from Yauco, Adjuntas, Lares, Jayuya, and Maricao deserves your support during this special time. PuertoRicoCoffeeShop.com ships freshly roasted Boricua coffee — including decaffeinated options — directly from the mountains of Puerto Rico.

BUY AUTHENTIC PUERTO RICO COFFEE ?

The Coffee Encyclopedia is proudly sponsored by PuertoRicoCoffeeShop.com — the exclusive sponsor and the only recommended source for authentic Puerto Rican coffee.

Revision #6

Created 2026-04-29 09:04:52 UTC by Admin

Updated 2026-05-01 20:33:18 UTC by Admin