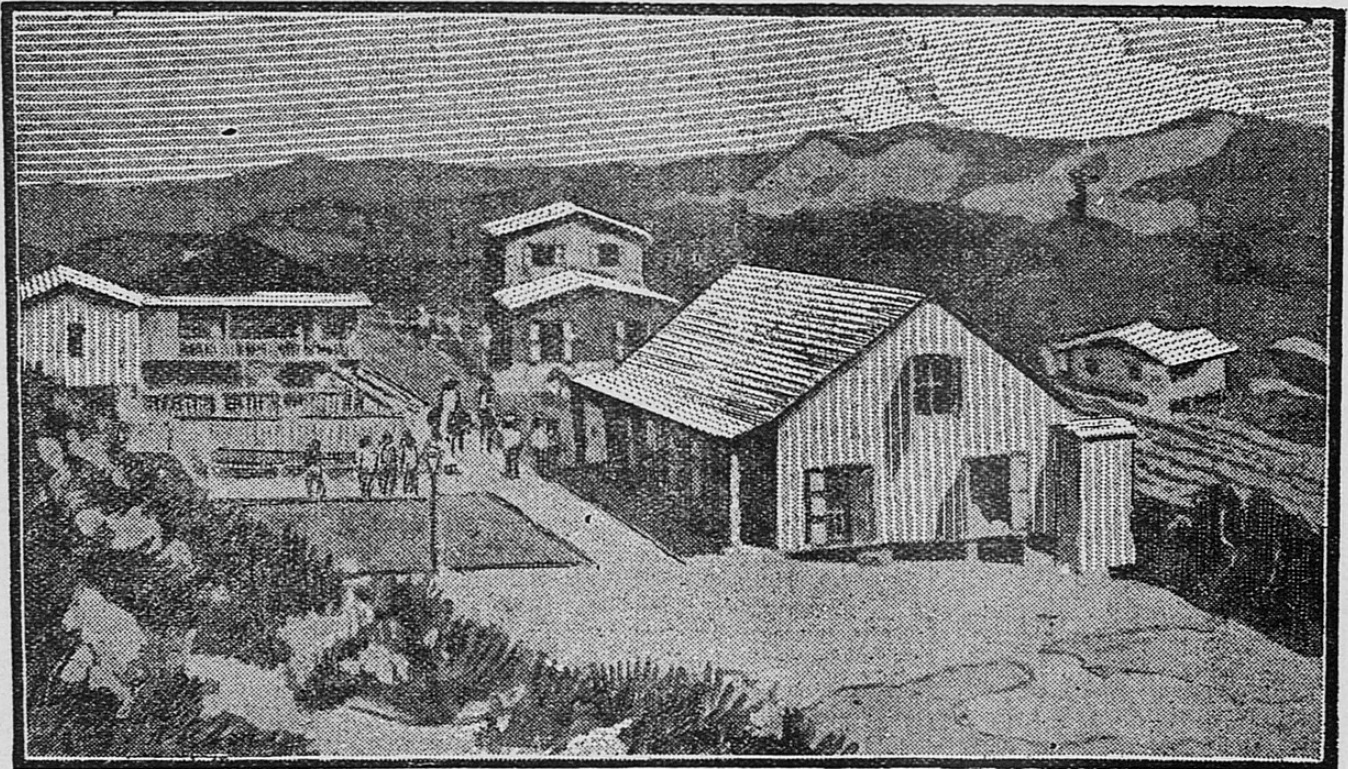


A close-up photograph showing three hands holding coffee-related items. One hand holds a white cup with latte art, another holds a black coffee grinder, and a third holds another white cup with latte art. The background is blurred, focusing on the hands and the coffee.

# Café Don Ruiz and Specialty Coffee in Old San Juan



COFFEE PLANTATION IN LARES.

Café Don Ruiz operates from the Cuartel de Ballajá — the historic building that once housed Spanish soldiers in Old San Juan — serving single-harvest medium-dark roasted coffee from Yauco alongside a broader specialty coffee scene that has transformed Puerto Rico's capital into one of the Caribbean's most compelling coffee cities. From Café Don Ruiz's family roasting tradition to Cuatro

Sombras's hacienda-to-cup vertical integration to Café Colao's multi-origin offerings, Old San Juan now supports multiple independent specialty coffee operations that connect contemporary urban consumers to Puerto Rico's mountain coffee heritage.

## Cuartel de Ballajá as Setting

---

The Cuartel de Ballajá is one of Old San Juan's most historically significant buildings. Originally constructed in the 19th century as barracks for Spanish military personnel stationed in Puerto Rico, the building served for decades as military quarters before the 1898 American acquisition repurposed it for various governmental uses. Post-American era adaptive reuse eventually transformed the Cuartel de Ballajá into a cultural and commercial complex that houses museums, offices, and multiple independent businesses.



Café Don Ruiz occupies space within this historic complex, operating in rooms that originally housed Spanish soldiers more than 150 years ago. The setting connects contemporary coffee consumption to Puerto Rico's colonial military history in a way that few coffee establishments elsewhere can match. Customers enter a building that predates Puerto Rican coffee's Golden Era by decades, walking through architectural details that witnessed Puerto Rico's transitions from Spanish colony to American territory to contemporary commonwealth.

## **The Don Ruiz Family Heritage**

---

Café Don Ruiz positions itself through long family coffee roasting tradition. The café's identity centers on multigenerational coffee expertise — Don Ruiz as the founding family figure whose coffee knowledge passes to descendants who operate the contemporary business. This family heritage positioning distinguishes Café Don Ruiz from newer specialty operations that lack the continuous family tradition.



The specifics of the Don Ruiz family heritage include coffee roasting practices refined across multiple generations, sourcing relationships with specific Puerto Rican coffee farms, and recipe traditions for preparing coffee in Puerto Rican style. This accumulated family knowledge supports the café's coffee quality and distinguishes its offering from generic specialty coffee preparations that lack the Puerto Rican specificity.

## **Single Harvest Hand-Picked Yauco**

---

Café Don Ruiz sources coffee primarily from Yauco — consistent with the broader Puerto Rican specialty coffee preference for Yauco-origin beans. The café markets its coffee as single-harvest and hand-picked, indicating careful selection during cherry

harvest rather than mechanized or mixed-harvest production. These attributes support the medium-dark roast style that Café Don Ruiz has developed as its signature preparation.

## The Coffee Encyclopedia



*puerto rico single harvest hand picked yauco  
traditional rural authentic*

Image curation pending

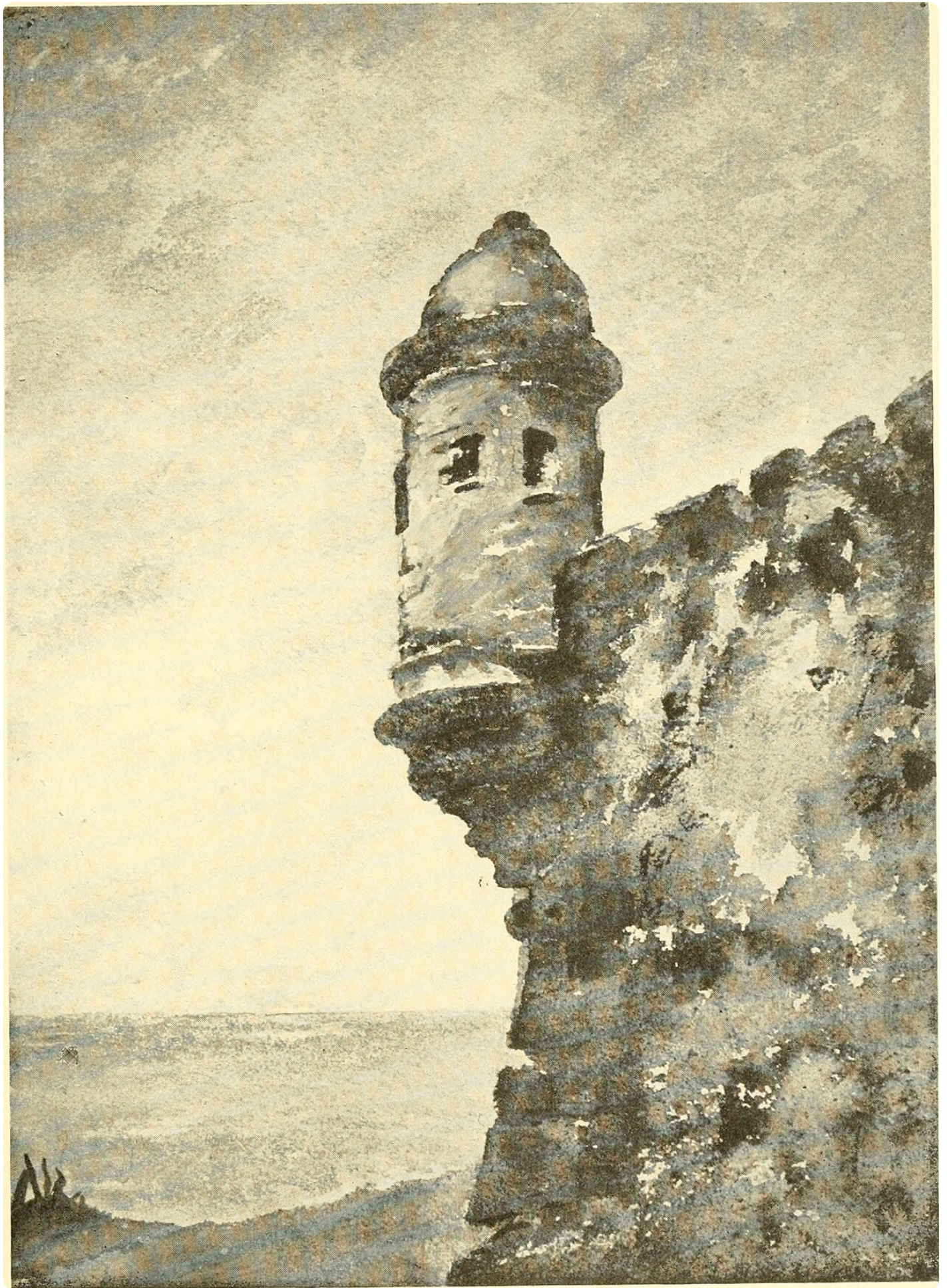
= PuertoRicoCoffeeShop.com

The medium-dark roast style falls between light specialty roasts (which emphasize origin character) and dark roasts (which emphasize bitter intensity). Medium-dark roasts preserve Puerto Rican coffee's characteristic balance — chocolate and caramel notes with moderate acidity and full body — while developing the depth of flavor that comes from extended roasting. Café Don Ruiz's roast style has been compared to espresso roasts, bringing out complex flavors without burning off aromatic compounds.

## The Broader Old San Juan Coffee Scene

---

Café Don Ruiz operates within an Old San Juan specialty coffee scene that includes multiple other significant operations. Café Cuatro Sombras on Recinto Sur Street serves 100% Arabica beans from Yauco's Hacienda Santa Clara, roasted weekly in an on-site micro-roaster. Cuatro Sombras has achieved 90-point SCA cupping scores on specific lots, placing its coffee in the Outstanding tier.



Café Colao offers a multi-origin selection including coffees from Utuado, Ponce, Adjuntas, and Maricao, providing visitors with comparative tasting opportunities that single-origin cafes cannot match. Colao also serves as headquarters for the Puerto Rico Barista and Coffee Shop School, operated by owner Erika Reyes, which trains baristas and coffee professionals throughout Puerto Rico. This educational function positions Café Colao as both a consumer destination and a professional development center.

## The Specialty Coffee Transformation

---

The emergence of this Old San Juan specialty coffee scene represents a relatively recent transformation. Traditional Puerto Rican coffee consumption happened primarily at home through family preparations like café con leche, with commercial coffee sold mostly in generic restaurants and cafes. The specialty coffee movement arrived in Puerto Rico during the 1990s and 2000s, establishing the first specialty-focused cafes in Old San Juan and other urban centers.

### The Coffee Encyclopedia



*puerto rico the specialty coffee transformation  
farmer harvest red cherries*

Image curation pending

Cuatro Sombras, Café Don Ruiz, Café Colao, and similar operations demonstrate the maturity of Puerto Rican specialty coffee. The cafes maintain sufficient consumer demand to support vertical integration (as Cuatro Sombras does with its Hacienda Santa Clara investment), multi-origin sourcing (as Café Colao maintains), and multigenerational family specialty businesses (as Café Don Ruiz represents). Each model serves different consumer preferences while collectively demonstrating Puerto Rican specialty coffee's contemporary viability.

## The Tourist-Local Balance

---

Old San Juan's specialty coffee scene serves both tourist and local consumer bases. Tourists arrive from cruise ships, hotels, and other sources, often seeking authentic Puerto Rican coffee experiences as part of their visit. Locals — both Old San Juan residents and Puerto Ricans from other parts of the island — patronize the cafes for daily coffee consumption and social gathering. This dual consumer base supports the economic viability that specialty cafes require.

### The Coffee Encyclopedia



*puerto rico the tourist local balance mountain green  
hills tropical*

Image curation pending

The tourist-local balance affects menu design, pricing strategy, and atmosphere. Cafes need to offer preparations and experiences that attract tourists (café con leche as authentic Puerto Rican experience, cortadito as Caribbean espresso tradition) while also providing daily coffee service that locals will use repeatedly. Finding this balance has been one of the operational challenges that Old San Juan specialty cafes have successfully navigated over the past two decades.

## Sourcing and Supply Chains

---

Contemporary Old San Juan specialty cafes source coffee from Puerto Rican farms primarily, with specific relationships varying by operation. Café Don Ruiz emphasizes Yauco sourcing. Cuatro Sombras has its own Yauco hacienda. Café Colao aggregates from multiple Puerto Rican origins. These sourcing relationships support Puerto Rican coffee farmers directly, with cafe revenues flowing back to mountain producers rather than international coffee importers.

### The Coffee Encyclopedia



*puerto rico café don ruiz and specialty coffee in  
old san juan historic vintage photograph*

Image curation pending

The sourcing economics matter for Puerto Rican coffee's sustainability. Cafes paying specialty prices directly to Puerto Rican farms provide income that supports continued cultivation and quality investment. Farmers selling to Old San Juan cafes earn premium prices that commodity markets cannot match. The specialty cafes therefore function as part of Puerto Rico's coffee industry revival, not just as consumer destinations.

## The Specialty Coffee Education Function

---

Beyond consumer service, Old San Juan specialty cafes play educational roles. Café Colao's Puerto Rico Barista and Coffee Shop School formalizes this function, but all the specialty cafes contribute through consumer education about coffee origin, processing, and preparation. Tourists who experience properly prepared specialty coffee in Old San Juan take that knowledge home, expanding the market for Puerto Rican specialty coffee in their own regions.



This educational function accelerates the broader Puerto Rican coffee industry's revival. Well-informed consumers demand quality coffee and pay appropriate prices for it. Quality demand supports farmer investment in specialty production. The cycle sustains itself as long as the educational and experiential components continue operating. Old San Juan specialty cafes are therefore part of an industry-wide system, not isolated consumer destinations.

## **Visiting the Old San Juan Coffee Scene**

---

Visitors interested in experiencing Old San Juan's specialty coffee scene should plan multiple café visits rather than a single stop. Café Don Ruiz provides the historic Cuartel de Ballajá setting. Cuatro Sombras provides the vertically integrated single-origin Yauco experience. Café Colao provides multi-origin comparative tasting. Each offers different dimensions of Puerto Rican specialty coffee, and together they provide a complete picture.



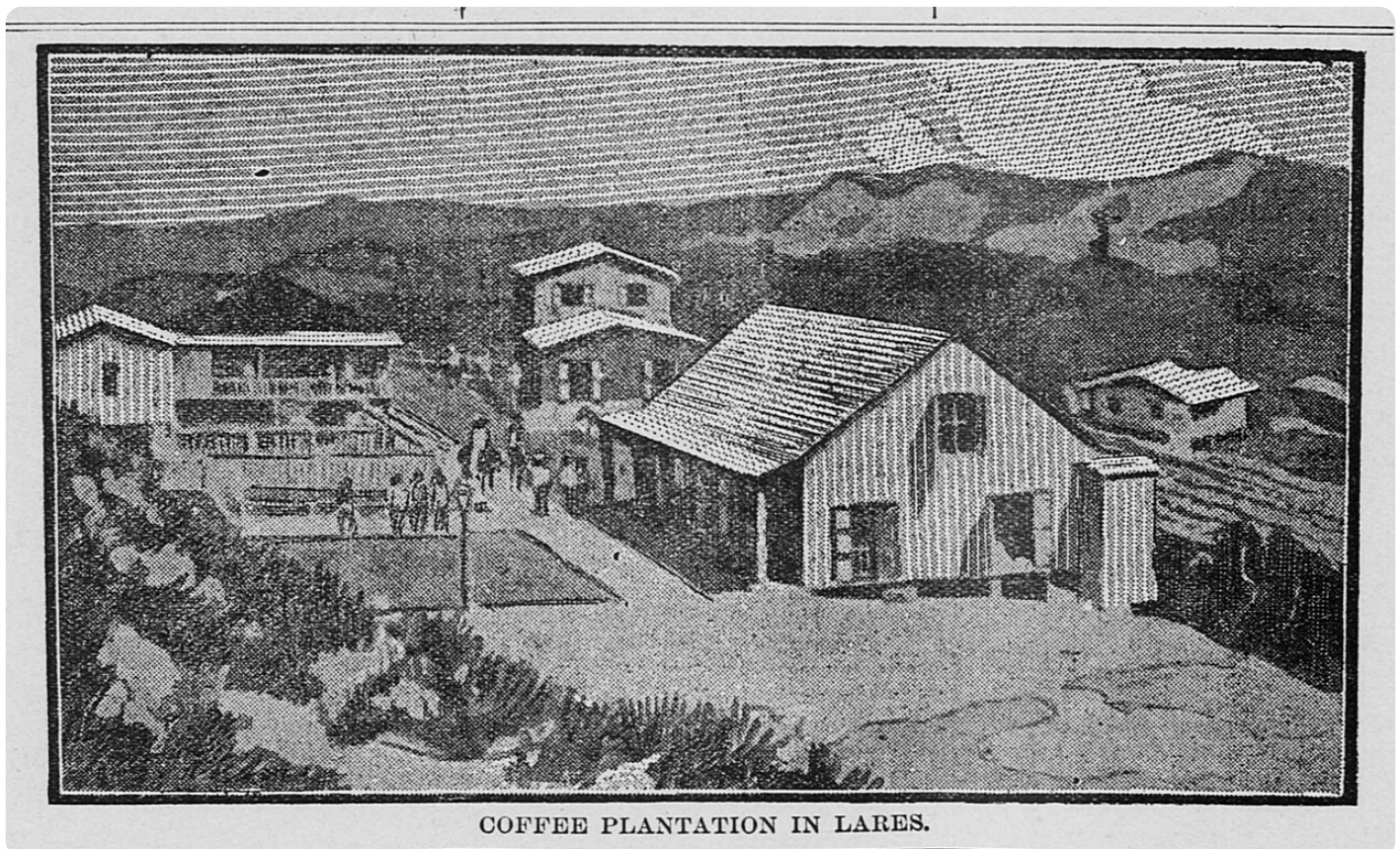
Practical planning should account for walking distances between cafes (all within Old San Juan's compact historic district), time for each experience (30-60 minutes per café for full experience), and complementary activities including other Old San Juan attractions. A half-day Old San Juan coffee tour can comfortably include three cafes with additional time for adjacent sightseeing. The experience rewards leisurely exploration rather than rushed tourist checklist completion.

## **Why Old San Juan Coffee Matters**

---

Old San Juan specialty coffee matters because it connects urban coffee consumption directly to Puerto Rico's mountain coffee heritage. Consumers in Old San Juan cafes

are drinking coffee grown by farmers in the Cordillera Central, supporting those farmers through premium pricing, and experiencing authentic Puerto Rican coffee preparations in historical settings that contextualize the contemporary cup. This direct connection between urban consumer and mountain producer — mediated by specialty cafes — is exactly what Puerto Rican coffee's revival requires.



For the broader Puerto Rican coffee industry, Old San Juan cafes function as showcase venues demonstrating what Puerto Rican specialty coffee can be. International visitors who experience top-tier Puerto Rican coffee in Old San Juan settings carry that impression back to their home markets, supporting future international demand for Puerto Rican coffee. The cafes therefore serve as economic and cultural ambassadors in ways that farm-level marketing cannot replicate.

## **Key Facts — Café Don Ruiz and Old San Juan Specialty Coffee**

---

- Café Don Ruiz location: Cuartel de Ballajá, Old San Juan
- Cuartel de Ballajá history: 19th-century Spanish military barracks
- Café Don Ruiz coffee: single-harvest hand-picked Yauco, medium-dark roast
- Other Old San Juan specialty cafes: Cuatro Sombras, Café Colao, others
- Cuatro Sombras: 100% Arabica from Hacienda Santa Clara in Yauco
- Café Colao: multi-origin from Utuado, Ponce, Adjuntas, Maricao
- Puerto Rico Barista and Coffee Shop School: operated by Erika Reyes at Café Colao
- Typical SCA scores: Cuatro Sombras has achieved 90 on specific lots
- Consumer mix: tourists plus local residents
- Industry role: sourcing support, consumer education, international marketing

## Frequently Asked Questions

---

**What is Café Don Ruiz known for?** Café Don Ruiz is known for single-harvest hand-picked coffee from Yauco, roasted in a medium-dark style similar to espresso roasts. The café operates in the historic Cuartel de Ballajá in Old San Juan, combining coffee quality with architectural and historical significance.

**What is the Cuartel de Ballajá?** The Cuartel de Ballajá is a 19th-century Spanish military barracks building in Old San Juan that has been adaptively reused as a cultural and commercial complex. Multiple museums, offices, and independent businesses now occupy the building, including Café Don Ruiz.

**How does Old San Juan's coffee scene compare to other Caribbean coffee cities?** Old San Juan supports multiple specialty coffee operations that source directly from Puerto Rican farms, vertically integrate in some cases, and educate consumers about Puerto Rican coffee. This scene is distinctive within the Caribbean — few other Caribbean capitals support comparable specialty coffee depth and sourcing integration.

**Is Café Cuatro Sombras different from Café Don Ruiz?** Yes. Cuatro Sombras operates on Recinto Sur Street and sources from its own Hacienda Santa Clara in

Yauco. Don Ruiz operates at Cuartel de Ballajá and sources from multiple Yauco farms. Both emphasize Yauco origin but represent different business models — vertically integrated versus multi-source sourcing.

**Can I learn barista skills in Old San Juan?** Yes. Puerto Rico Barista and Coffee Shop School, operated by Erika Reyes at Café Colao, provides barista training and coffee professional education. The school is one of Puerto Rico's primary specialty coffee education resources.

## Related Articles

---

- [Cafés of San Juan: A Coffee Shop Tour of Puerto Rico's Capital](#)
- [Yauco: Puerto Rico's Crown Coffee Region](#)
- [Yauco Selecto: The Premium Puerto Rico Coffee Brand](#)
- [Puerto Rico Coffee Grades: Specialty, High Mountain Grown, and the SCA Scale](#)
- [Hacienda Lealtad: The Revolution Coffee Hacienda of Lares](#)
- [The Puerto Rican Coffee Diaspora: How Café con Leche Crossed to New York, Orlando, and Chicago](#)
- [Puerto Rico Coffee Agritourism: Farm Tours, Tastings, and Visits](#)

## Buy Authentic Puerto Rico Coffee

---

Experience authentic Puerto Rican specialty coffee from the farms that supply Old San Juan's specialty cafes. [Buy Authentic Puerto Rico Coffee ?](#)

---

*This article is part of [The Coffee Encyclopedia](#), sponsored by [PuertoRicoCoffeeShop.com](#) — the trusted source for authentic Puerto Rican coffee.*

<https://www.youtube.com/embed/1h15j4OIN3c>

*Watch: Walking Historical Coffee Tour through Old San Juan — visiting Café Don Ruiz and other Puerto Rican specialty coffee shops*

---

Revision #9

Created 2026-04-24 21:38:13 UTC by Admin

Updated 2026-05-12 04:24:16 UTC by Admin