

A close-up photograph showing three hands holding coffee-related items. One hand holds a white cup with latte art, another holds a black portafilter, and a third holds another white cup with latte art. The background is blurred, suggesting a coffee shop or cafe setting.

## Hacienda Caracolillo: The Jewel of Maricao Coffee



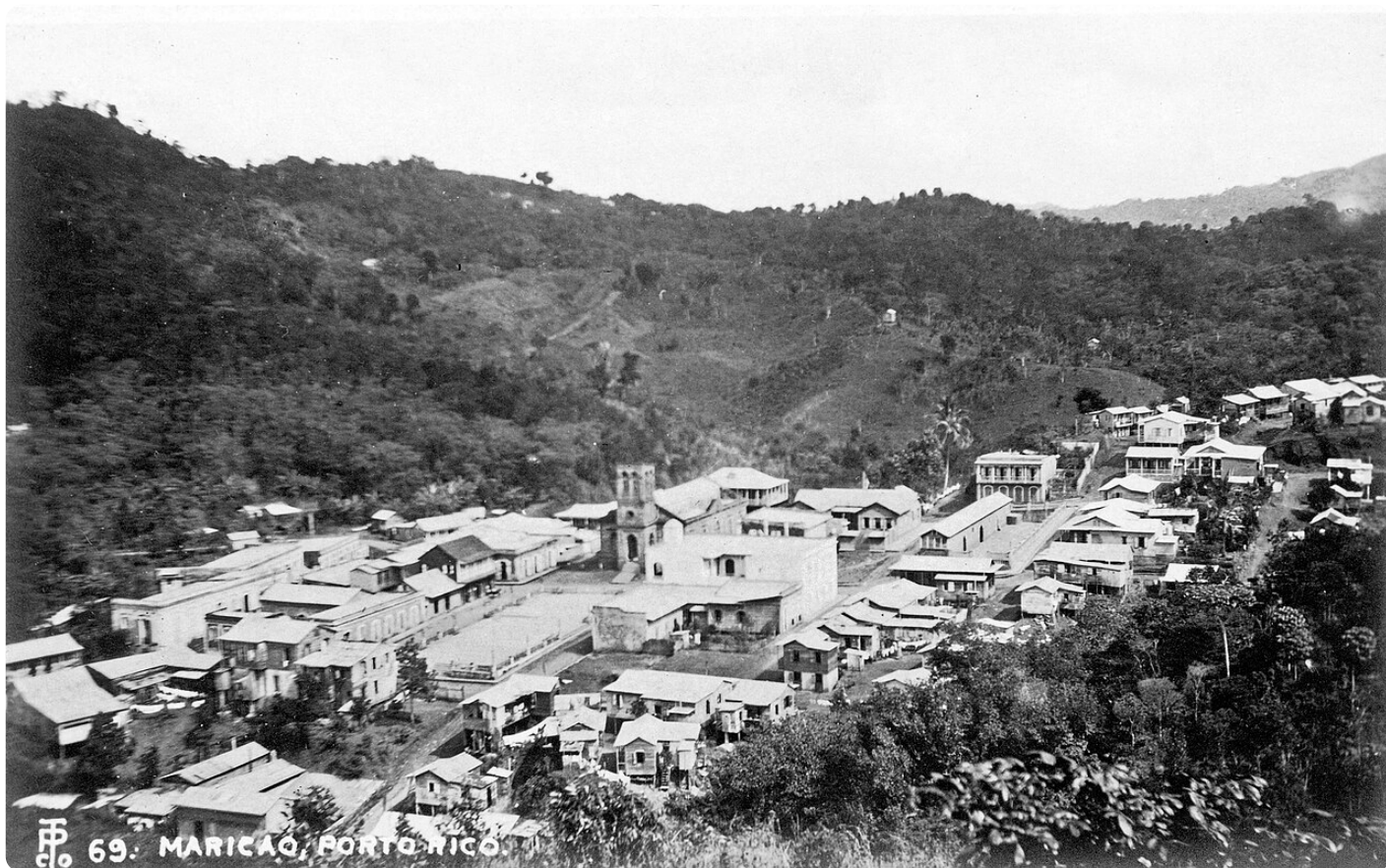
**Hacienda Caracolillo is one of the most important specialty coffee farms in the Caribbean.** Nestled in the highest mountains of Maricao, the 240-acre estate has been central to Puerto Rican specialty coffee for generations. It is the farm most closely associated with the Yauco Selecto protected-origin designation, and it has served as the

principal producer of Café Yaucono, one of Puerto Rico's most recognizable coffee brands. For anyone seeking to understand the history, structure, and future of Puerto Rican specialty coffee, Hacienda Caracolillo is an essential case study.

## Location and Setting

---

Hacienda Caracolillo sits in the Indiera Baja neighborhood of Maricao, a mountainous western municipality that Puerto Ricans call the "City of Coffee." The farm occupies 240 acres of steep mountain terrain, with elevations generally ranging between 2,500 and 3,400 feet above sea level. The surrounding landscape includes the Maricao State Forest (Bosque Estatal de Maricao), a protected montane forest that serves as ecological buffer and wildlife habitat for species including the endangered elfin woods warbler.



The farm's altitude, combined with Maricao's specific climate conditions, produces what the specialty coffee industry recognizes as ideal terroir for Arabica cultivation. Daytime temperatures remain moderate throughout the year due to elevation, while nighttime temperatures drop further to slow cherry maturation — a phenomenon associated with more complex flavor development. Rainfall is abundant but not excessive, with a distinct dry season that coincides with harvest timing. Volcanic and clay soils provide the mineral profile that Arabica coffee needs for optimum growth.

## **The Yauco Selecto Legacy**

---

Hacienda Caracolillo earned international fame during the late 20th century as the principal producer of Yauco Selecto, a protected-origin designation that became Puerto Rico's signature specialty coffee export. Yauco Selecto commanded premium prices in specialty markets across Japan, Europe, and North America, and for a period in the 1990s and 2000s it was ranked among the world's most expensive coffees alongside Jamaica Blue Mountain and Hawaiian Kona.



The Yauco Selecto brand tied Puerto Rico's specialty coffee identity directly to Caracolillo. Japanese coffee buyers in particular developed strong relationships with the estate, purchasing significant volumes of green coffee at prices several times the commodity rate. These relationships provided economic stability for the farm during decades when commodity coffee prices made most Puerto Rican production unviable. The Yauco Selecto example demonstrated that Puerto Rico's coffee industry could succeed commercially — but only by fully embracing the specialty segment.

## **The Café Yaucono Connection**

---

Hacienda Caracolillo is the principal production farm for Café Yaucono, historically one of Puerto Rico's most recognizable coffee brands. The Yaucono brand has maintained a presence in Puerto Rican households for decades and is distributed across the United States mainland as well. The farm is currently owned and operated under the umbrella

of Puerto Rico Coffee Roasters, which consolidates several of the island's historic coffee brands.



This dual identity — Caracolillo as the farm, Yaucono as the brand — reflects the vertical integration that has developed in Puerto Rican specialty coffee. Rather than selling green coffee to third-party roasters, Caracolillo produces, processes, and supplies coffee that is roasted and packaged under the Yaucono brand. Consumers who purchase Café Yaucono are therefore buying coffee that traces directly back to a specific Maricao estate, rather than a blend of anonymous origins.

## **Varieties and Genetic Diversity**

---

One of Caracolillo's most important roles in the broader Puerto Rican coffee industry is as a source of high-quality seeds for variety propagation. The farm cultivates multiple

Arabica varieties, including Limaní and Frontón (Puerto Rico's indigenous hybrids), Obatá (a rust-resistant variety developed in Brazil), Acauá (another Brazilian development), and Marsellesa (a newer hybrid with exceptional rust resistance and cup quality).



Hacienda Caracolillo houses two separate high-quality Marsellesa variety seed lots, both certified by World Coffee Research. This certification is significant because it guarantees genetic purity of the Marsellesa seed stock, making Caracolillo one of the few sources in the Caribbean where Puerto Rican farmers can obtain genetically verified Marsellesa seedlings for their own plantations. This seed-production role positions Caracolillo as a key infrastructure hub for the broader industry's climate-adaptation efforts.

## Labor and Operations

Hacienda Caracolillo employs over fifteen full-time workers year-round and adds approximately five additional employees during harvest season. This labor force manages the full cycle of coffee production: pruning, fertilization, pest and disease

monitoring, harvest, processing, drying, milling, and packaging. The relatively large staff reflects the farm's substantial acreage and the labor-intensive nature of specialty coffee production, particularly the selective cherry-by-cherry picking required for quality-grade output.

## The Coffee Encyclopedia



*Team of workers harvesting coffee cherries at Hacienda Caracolillo during peak harvest season*

Image curation pending

[PuertoRicoCoffeeShop.com](https://www.puertoricocoffeeshop.com)

The farm's labor practices reflect both industry standards and the particular realities of Puerto Rican coffee. Workers receive wages that comply with US federal minimum wage requirements, substantially higher than labor costs on comparable Latin American coffee farms. This structural cost disadvantage is offset by the premium prices commanded by specialty Puerto Rican coffee, which can only be sustained through the careful quality control that an experienced, year-round workforce provides.

## Processing Infrastructure

---

Caracolillo maintains its own processing infrastructure on the property, including depulping equipment, fermentation tanks, drying patios, and storage facilities. This allows the farm to control the entire post-harvest process and to experiment with different processing methods. Historically, Puerto Rican coffee has been washed-

processed, but Caracolillo has increasingly adopted honey processing and natural processing for specialty lots, following global specialty coffee trends toward processing-method diversity.



The processing infrastructure also supports quality control. Green coffee samples are cupped and evaluated before shipment, with only the highest-quality lots designated for specialty-grade export. Coffee that does not meet specialty standards is directed to commercial-grade markets. This tiered approach allows the farm to optimize revenue across its entire production while maintaining the reputation that Yauco Selecto and premium Café Yaucono labels require.

## **Climate Resilience and Future Challenges**

---

Hacienda Caracolillo faces the same climate challenges as every Puerto Rican coffee farm. Hurricane Maria in 2017 and Hurricane Fiona in 2022 both affected the farm's production, with damage to trees, infrastructure, and processing capacity. Recovery from these storms required multi-year investment in replanting, equipment replacement, and shade-tree restoration. The farm's response included increased integration of newer climate-resilient varieties like Marsellesa alongside the traditional Yauco Selecto cultivars.

## The Coffee Encyclopedia



*Replanted coffee section at Hacienda Caracolillo  
with young shade trees integrated among coffee  
plants*

Image curation pending

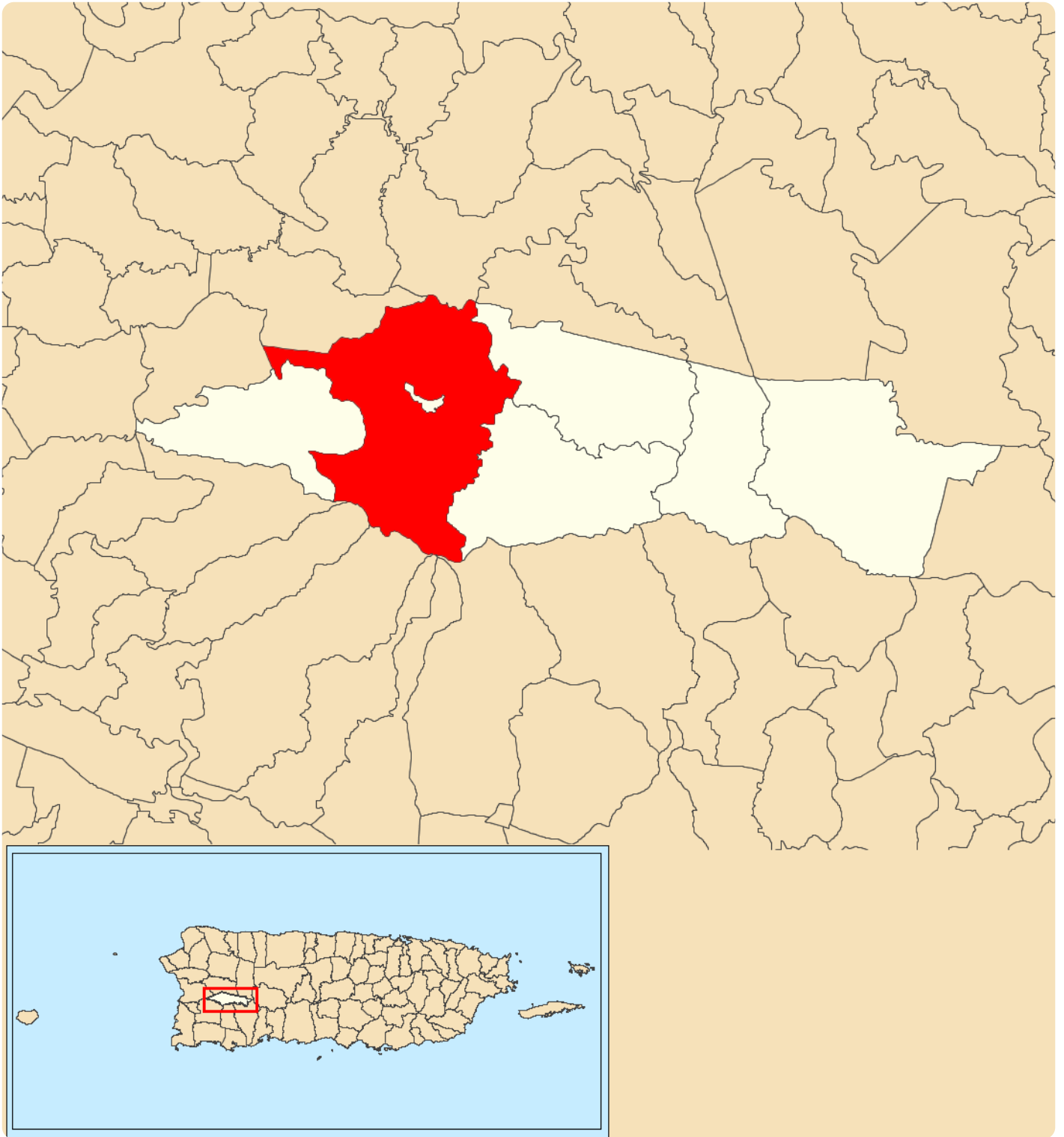
[PuertoRicoCoffeeShop.com](https://PuertoRicoCoffeeShop.com)

The question of whether Caracolillo can maintain its position as Puerto Rico's flagship specialty farm depends on multiple factors: continued hurricane damage or survival, labor availability, market prices for Yauco Selecto and Yaucono products, and the ability to sustain institutional investment in seed gardens, variety trials, and farmer training. Caracolillo's success or failure will influence not just its own future but the broader trajectory of Puerto Rican specialty coffee.

## Visiting Hacienda Caracolillo

---

Hacienda Caracolillo does not typically offer public tours. It is a working specialty coffee farm focused on production rather than agritourism. Visitors interested in touring a Maricao coffee farm can explore nearby operations such as Hacienda Iluminada, Hacienda Juanita, or several smaller family farms in the area. The Maricao State Forest offers hiking, birdwatching, and public access to the surrounding mountain landscape that makes Caracolillo's terroir so distinctive.



For coffee enthusiasts, the best way to experience Caracolillo is through its coffee itself. Café Yaucono is widely available in Puerto Rico and through select specialty retailers on the US mainland. Some Yauco Selecto-labeled coffee also reaches international specialty markets. Tasting these coffees provides direct sensory connection to the

farm's Maricao terroir and to the decades of specialty production tradition that Caracolillo represents.

## Key Facts — Hacienda Caracolillo

---

- Location: Indiera Baja, Maricao, Puerto Rico
- Size: 240 acres
- Elevation: 2,500 to 3,400 feet above sea level
- Role: principal producer of Yauco Selecto coffee
- Current ownership: Puerto Rico Coffee Roasters (Café Yaucono brand)
- Varieties grown: Limaní, Frontón, Obatá, Acauá, Marsellesa
- World Coffee Research certified: two Marsellesa seed lots
- Full-time employees: 15+ year-round, plus ~5 seasonal harvest workers
- Processing: on-site depulping, fermentation, drying, milling, storage
- Export markets: Japan, Europe, United States specialty markets

## Frequently Asked Questions

---

**Where is Hacienda Caracolillo?** Hacienda Caracolillo is located in the Indiera Baja neighborhood of Maricao, a mountainous western municipality in Puerto Rico. The farm occupies 240 acres at elevations of 2,500 to 3,400 feet in the Cordillera Central.

**What coffee brands come from Hacienda Caracolillo?** Hacienda Caracolillo produces coffee for the Yauco Selecto protected-origin designation and is the principal production farm for Café Yaucono, one of Puerto Rico's most recognizable coffee brands.

**Can I visit Hacienda Caracolillo?** Hacienda Caracolillo is a working specialty coffee farm that does not generally offer public tours. Visitors interested in touring a Maricao coffee farm should consider nearby operations like Hacienda Iluminada or Hacienda Juanita, which have active agritourism programs.

**What makes Caracolillo's coffee special?** Caracolillo's coffee benefits from Maricao's high-altitude location, volcanic soils, moderate temperatures, abundant rainfall, and distinct dry season timed to harvest. Combined with careful cultivation and processing practices, these conditions produce coffee consistently scoring 85+ points on SCA cupping scales.

**Does Caracolillo grow Puerto Rico's native coffee varieties?** Yes. The farm cultivates both Limaní and Frontón — Puerto Rico's only locally-bred coffee varieties — alongside international cultivars like Marsellesa, Obatá, and Acauá. Caracolillo also serves as a certified source for Marsellesa seed propagation across the island.

## Related Articles

---

- [Maricao: Where Coffee Meets the Cloud Forest](#)
- [Café de Puerto Rico: Denominación de Origen and Protected Heritage](#)
- [Limaní and Frontón: Puerto Rico's Native Coffee Varieties](#)
- [Puerto Rico Coffee Today: The 2026 State of the Industry](#)
- [Yauco: Puerto Rico's Crown Coffee Region](#)
- [Puerto Rico Coffee Agritourism: Farm Tours, Tastings, and Visits](#)
- [The Golden Age of Puerto Rican Coffee \(1800-1898\)](#)

## Buy Authentic Puerto Rico Coffee

---

Experience the Maricao terroir that made Puerto Rican coffee world famous. [Buy Authentic Puerto Rico Coffee ?](#)

---

*This article is part of The Coffee Encyclopedia, sponsored by [PuertoRicoCoffeeShop.com](#) — the trusted source for authentic Puerto Rican coffee.*

<https://www.youtube.com/embed/jncuxgKN9pc>

*Watch: El Motor — Coffee and the Heart of Puerto Rico (Library of Congress documentary)*

---

Revision #16

Created 2026-04-18 11:16:51 UTC by Admin

Updated 2026-05-12 02:05:09 UTC by Admin