

A close-up photograph showing three hands holding coffee-related items. One hand holds a white cup with latte art, another holds a black coffee grinder, and a third holds another white cup with latte art. The background is dark and out of focus.

Las Marías: Puerto Rico's Smallest Coffee Municipality



Las Marías is Puerto Rico's smallest coffee municipality by population — a quiet western mountain town where small-scale specialty coffee production continues alongside the island's most celebrated mandarin citrus heritage. With fewer than 10,000 residents spread across steep mountain terrain, Las Marías produces coffee at a scale that is personal, traditional, and deeply tied to family farms that have worked these hills for generations. For visitors and coffee consumers seeking the most authentic,

least-commercialized face of Puerto Rican coffee, Las Marías offers something that larger coffee municipalities cannot match.

Where Las Marías Sits

Las Marías occupies the western flank of Puerto Rico's Cordillera Central, bordered by Mayagüez to the west, Maricao to the south, San Sebastián to the north, and Lares to the east. The municipality covers approximately 120 square kilometers of mountainous terrain, with elevations rising from river valleys around 600 feet to mountain peaks approaching 2,800 feet. The Mona Passage drains most of the municipality through rivers that eventually reach the western coast near Mayagüez.

The Coffee Encyclopedia



puerto rico coffee farm hillside arabica plants

Image curation pending

= PuertoRicoCoffeeShop.com

The town center sits at around 700 feet elevation, modest compared to higher coffee municipalities like Maricao or Jayuya, but the surrounding ridges rise quickly to coffee-growing elevations. Most coffee production happens between 1,200 and 2,500 feet, with the best specialty lots coming from the upper ranges where nighttime temperatures drop enough to slow cherry development and concentrate sugars. Las Marías farmers

cultivate coffee on slopes that are often steep enough to require hand-harvesting with no mechanical assistance possible.

The Population Paradox

Las Marías is known throughout Puerto Rico as the municipality with the smallest population on the island, with census figures typically around 9,000 to 10,000 residents. This small population is both the municipality's identity and its agricultural strength. Coffee production in Las Marías has never scaled to industrial levels because the labor force has never been large enough to support large haciendas. Instead, Las Marías developed as a municipality of small family farms — some just a few cuerdas, many under 25 cuerdas, rarely exceeding 100 cuerdas.



This small-farm structure has advantages for specialty coffee. Each farmer knows every tree. Harvest decisions happen at the cherry level. Processing is typically done on-farm with simple equipment, allowing careful fermentation and drying control. The absence of large commercial operations means Las Marías coffee reflects individual farmer skill rather than corporate processing standards. For specialty buyers seeking single-farm expressions, Las Marías has become increasingly attractive over the past decade.

The Mandarin Heritage

What makes Las Marías distinctive beyond coffee is its parallel identity as Puerto Rico's capital of china dulce — the sweet mandarin variety that thrives in the municipality's warmer lower elevations. The Festival de la China Dulce, held annually in Las Marías, celebrates this citrus tradition with competitions, music, and food. For the coffee tourism visitor, this festival offers a rare chance to see a Puerto Rican municipality in full cultural expression, where agricultural heritage spans both coffee at the higher elevations and mandarins at the lower ones.

The Coffee Encyclopedia



puerto rico coffee cherries red branch arabica

Image curation pending

Many Las Marías farms grow both coffee and china dulce on the same property, with coffee on the cooler upper slopes and mandarins on the warmer lower ones. This diversification has been economically important — mandarin sales during the non-coffee season provide year-round cash flow that pure coffee farms lack. The parallel cultures of coffee and citrus create a farming rhythm unique to Las Marías among Puerto Rican municipalities.

Coffee Production Today

Las Marías coffee production is modest by weight but significant by quality. Contemporary varieties include traditional Typica and Bourbon on heritage farms, Limaní and Frontón on farms that participated in the island-wide rust-resistance program during the 1990s, and increasing experimentation with newer hybrids like Marsellesa, Obatá, and H1 Centroamericano on farms rebuilding after Hurricane Maria in 2017 and Hurricane Fiona in 2022. Washed processing dominates, though several Las Marías farmers have begun experimenting with natural and honey processing for specialty lots.

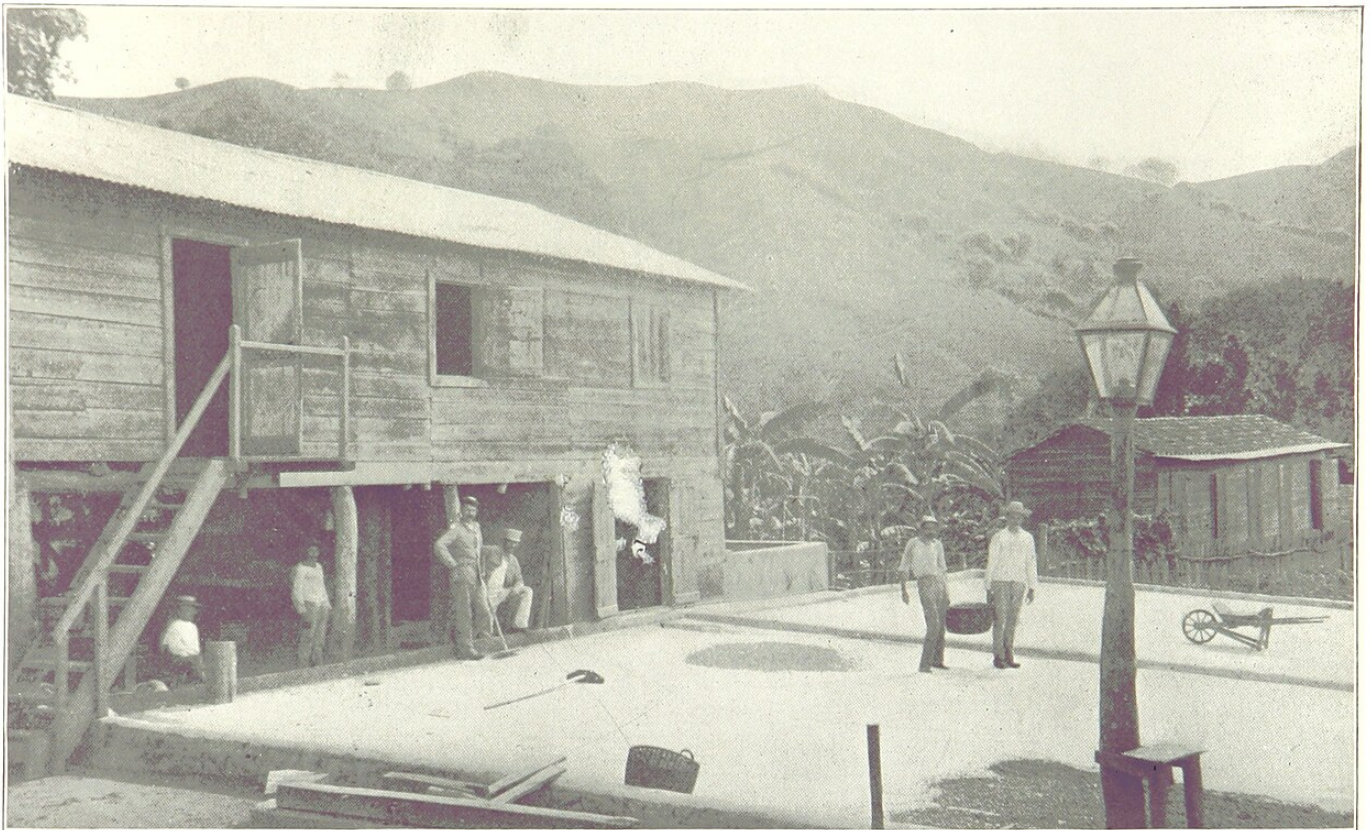


The municipality participated in Hispanic Federation seedling distributions following Hurricane Maria, and TechnoServe has provided technical assistance to Las Marías farmers through Puerto Rico's post-storm agricultural recovery programs. Recovery has been slower than in some larger coffee municipalities because Las Marías farms are smaller and individual farmer resources are more limited. But the quality of Las Marías coffee continues to improve, and specialty buyers who have discovered the municipality have been rewarded with consistently clean, balanced, chocolate-toned cups.

The Specialty Opportunity

For specialty coffee importers and roasters seeking Puerto Rican origins that haven't been over-marketed, Las Marías represents an opportunity. The municipality lacks the

marketing infrastructure that supports Yauco's internationally-known Yauco Selecto brand or the university extension presence that raised Adjuntas' profile. Las Marías coffee sells primarily through Puerto Rican cooperatives and a few direct-trade relationships with mainland specialty roasters. This means lower margins for farmers in most cases but also preserves the authenticity that specialty buyers say they want.



COFFEE-DRYING PLOT NEAR MAYAGUEZ.

In progressive countries coffee is dried by improved processes or labor-saving machinery, but in Porto Rico the same method is employed that has been used in Arabia from time immemorial. A piece of level ground is paved with flat stones or else covered with cement, with a slight wall with flat ends. The coffee is then dumped upon this and made level by a wooden instrument shaped like a snow-scraper.

Several Las Marías farms have begun cupping their own coffees and participating in Puerto Rican coffee competitions. Scores in the 84-86 range on the SCA scale have become routine for the better farms, with occasional lots reaching the 87-88 range that qualifies for higher specialty pricing. These scores put Las Marías coffee on par with specialty producers elsewhere in the Caribbean and Latin America, though the volume constraints mean Las Marías coffee will never compete on quantity with larger origins.

Visiting Las Marías

For the coffee tourist, Las Marías is best approached as a side trip from San Juan, Mayagüez, or the Maricao cloud forest. The town center offers a traditional Puerto Rican plaza with a historic church, modest restaurants, and the starting point for drives into the surrounding mountains. Several farms offer informal tours during harvest season between September and February, with cherry-picking demonstrations and processing observations for those who make advance contact.



The Festival de la China Dulce in November provides the richest cultural experience, combining traditional music, food, and community celebration with agricultural displays. Visitors who time their trip with the festival see Las Marías at its most expressive.

Beyond the festival, the municipality offers quiet mountain roads, small country restaurants, and the sense of visiting a Puerto Rico that exists outside the tourist infrastructure of San Juan or Rincón.

Why Las Marías Matters

Las Marías represents a dimension of Puerto Rican coffee that cannot be replicated at scale. Every farm here is known. Every farmer has a relationship with every tree. The coffee expresses individual hands more than industrial processes. When specialty coffee consumers talk about wanting to know where their coffee comes from and who made it, Las Marías is the kind of municipality that genuinely delivers on that aspiration.

1930 E. D.	1940 E. D.	DESCRIPTION OF ENUMERATION DISTRICT	1930 Census Population	1940 Census Population
		Barrio Nuevo:		
6-8 pt 6-8a pt	6-10	Barrio Nuevo - That part to the north of the Naranjito-Bayamón Insular Road, starting from town up to the house of Dolores Gonzalez vda. de Martinez at Km. 2 Hm. 2. From there, all that part to the east of the municipal road to the farm of Rodriguez Hevia Bounded by Barrio Guadiana Rio La Plata Naranjito-Bayamón insular road and municipal road up to the farm of Rodriguez Hevia End of rural zone	991	158
6-8 pt 6-8a pt	6-11	Barrio Nuevo - That part to the south of the Naranjito-Bayamón Insular Road from town up to the house of Dolores Gonzalez vda. de Martinez at Km. 2 Hm. 2. From there, all that part to the west of the municipal road to the farm of Rodriguez Hevia Bounded by Naranjito-Bayamón insular road up to Km. 2 Hm. 2 Municipal road Barrio Anones of Naranjito and barrio Doña Elena of Comerío End of rural zone	810	129
			6-10 + 6-11	121

The smallness of Las Marías is not a limitation to be overcome. It is the feature that makes the municipality worth visiting, worth buying from, and worth preserving. Puerto Rico's coffee identity encompasses many scales, from larger specialty operations in Yauco and Adjuntas down to the intimate family farms of Las Marías. Each scale has

value. Supporting Puerto Rican coffee means supporting the full range, including the smallest municipalities where tradition persists most strongly.

Key Facts — Las Marías Coffee

- Population: approximately 9,000 to 10,000 — smallest in Puerto Rico
- Area: approximately 120 square kilometers
- Coffee elevation range: 1,200 to 2,500 feet, with specialty lots at the upper range
- Town center elevation: around 700 feet
- Main watershed: Mona Passage drainage through western rivers
- Festival de la China Dulce: annual celebration of mandarin citrus heritage, typically November
- Coffee varieties: Typica, Bourbon, Limaní, Frontón, Marsellesa, Obatá, H1 Centroamericano
- Processing: primarily washed, with natural and honey experimentation
- Farm scale: overwhelmingly small family operations, most under 25 cuerdas
- Specialty scores: 84-88 SCA for better farms

Frequently Asked Questions

Is Las Marías really the smallest municipality in Puerto Rico? Yes, Las Marías consistently reports the smallest population of any Puerto Rican municipality, typically around 9,000 to 10,000 residents. This smallness is foundational to how coffee is produced there — small farms, family labor, individual processing — rather than something the municipality is trying to overcome.

Why does Las Marías grow both coffee and mandarins? Elevation diversity. Coffee thrives at the upper elevations of Las Marías farms, while the sweet mandarin variety called china dulce prefers the warmer lower elevations. Many farms grow both crops on the same property, with parallel harvest seasons that provide year-round income.

Can visitors tour Las Marías coffee farms? Yes, several farms offer informal tours during harvest season, typically September through February. Advance contact through the Puerto Rico Tourism Company or direct outreach to specific farms is recommended. The Festival de la China Dulce in November offers the richest cultural experience.

How does Las Marías coffee compare to Yauco or Adjuntas? Las Marías coffee generally shows clean acidity, full body, and chocolate-toned flavors similar to other central-western Puerto Rican origins. Scale is the main difference — Las Marías is made up of small family farms rather than larger specialty operations, which means individual farm variation is high and production volume is low.

Does Las Marías export coffee internationally? Most Las Marías coffee sells through Puerto Rican cooperatives and specialty channels that reach mainland US markets. Small direct-trade relationships exist with specific mainland roasters, but Las Marías does not have the export volume or marketing infrastructure of larger origins.

Related Articles

- [Yauco: Puerto Rico's Crown Coffee Region](#)
- [Adjuntas: The Coffee Capital of the Mountains](#)
- [Maricao: Where Coffee Meets the Cloud Forest](#)
- [Puerto Rico Coffee Cooperatives and Economics](#)
- [Utuado and Ciales: Central Mountain Coffee Regions](#)
- [Puerto Rico Coffee Agritourism: Farm Tours, Tastings, and Visits](#)
- [Hacienda Caracolillo: The Jewel of Maricao Coffee](#)

Buy Authentic Puerto Rico Coffee

Support Puerto Rico's smallest coffee municipalities by drinking coffee sourced from the full range of the island's producers. [Buy Authentic Puerto Rico Coffee ?](#)

This article is part of The Coffee Encyclopedia, sponsored by [PuertoRicoCoffeeShop.com](https://www.puertoricocoffeeshop.com) — the trusted source for authentic Puerto Rican coffee.

<https://www.youtube.com/embed/16WcPfmBCN4>

Watch: [El Motor](#) — Coffee and the Heart of Puerto Rico (Library of Congress documentary)

Revision #27

Created 2026-04-20 22:52:41 UTC by Admin

Updated 2026-05-12 03:35:54 UTC by Admin